



Packaged Fluid Chillers

CA Series

Nominal capacities 11 to 216 Kw

Standard Features

- Designed and made in Australia for Australian conditions
- Heavy Gauge Galvabond steel frame and panels
- Powder coat finish
- Fully weatherproof
- Hermetic and semi-hermetic reciprocating compressors (scroll compressors in CA40 and CA80)
- Unique serviceable shell & tube evaporator
- Speed controlled high performance condenser fans
- Controls standard for normal or low temperature application
- Epoxy coated condenser coils
- Prewired electrical panel
- Electronic Temperature Controller



Standard Factory Options

- Single or multiple pumps
- Evaporator shell anti-corrosion internal coating
- 304 or 316 Stainless Steel panels
- Pressure and temperature gauges
- Copper fin condenser coils
- Soft start control (CA10-CA80)
- Heat recovery system
- Fluid/fluid heat exchanger for process cooling
- EC condenser fans
- Chiller with remote condenser
- Alternative refrigerants (R407F, R134a)
- Marine condenser (CW unit)
- Condensing unit (CU unit)
- Water cooled condenser (CW unit)
- Electronic Expansion Valves
- Buffer tank 200 L or 400 L



| MODEL | CA10 | CA15 | CA20 | CA26 | CA33 | CA40 | CA52 | CA66 |
|--|------|------|------|------|------|------|------|------|
| REFRIGERATION SYSTEM | | | | | | | | |
| Cooling capacity at nominal conditions, kW | 11 | 15 | 20 | 25 | 32 | 39 | 51 | 64 |
| Number of systems | 1 | | | | | | 2 | |
| Capacity control steps total/unit | 1 | | | 2 | | | | |

| COMPRESSORS | | | | | | | | |
|---|------|------|------|------|------|------|------|------|
| Number of compressors | 1 | | | | | | 2 | |
| Nominal Power input/compressor, kW | 3.6 | 6.0 | 6.7 | 8.9 | 12.1 | 11.2 | 8.9 | 12.1 |
| Nominal current/compressor, A | 6.9 | 11.1 | 12.3 | 14.4 | 19.6 | 20.9 | 14.4 | 19.6 |
| Maximum power input/compressor, kW | 5.7 | 8.9 | 10.4 | 13.6 | 17.5 | 18.6 | 13.6 | 17.5 |
| Maximum operating current/compressor, A | 12.5 | 18.5 | 22.0 | 27.0 | 36.0 | 35.0 | 27.0 | 36.0 |

| EVAPORATOR | | | | | | | | |
|-------------------------------------|--------------|-----|----|-----|-----|----|-----|-----|
| Type | shell & tube | | | | | | | |
| Water connections (vessel only), mm | 25 | 25 | 25 | 50 | 50 | 50 | 50 | 50 |
| Nominal water flow rate, l/s | 0.5 | 0.7 | 1 | 1.2 | 1.6 | 2 | 2.5 | 3.2 |

| CONDENSER | | | | | | | | |
|--|------|--|------|--|--|------|------|--|
| Number of fans | 1 | | 1 | | | 2 | | |
| Full load total current, A | 3.3 | | 5 | | | 10 | | |
| Full load total power, kW | 0.76 | | 2.6 | | | 5.2 | | |
| Total air flow, l/s | 2870 | | 4983 | | | 6940 | 7998 | |
| Fan sound pressure level, dB(A) at 3 m | 48 | | 61 | | | 67 | 65 | |

| | | | | | | | | |
|-----------------------------------|------|------|------|------|------|------|------|------|
| Unit maximum operating current, A | 15.8 | 21.8 | 27.0 | 32.0 | 41.0 | 45.0 | 64.0 | 82.0 |
|-----------------------------------|------|------|------|------|------|------|------|------|

| Physical data | | | | | | | | |
|------------------|------|------|------|------|------|------|------|------|
| Length L1, mm* | 1440 | 1440 | 2340 | 2340 | 2340 | 2340 | 2340 | 2340 |
| Length L2, mm** | 2200 | 2200 | 3100 | 3100 | 3100 | 3100 | 3100 | 3100 |
| Width, mm | 920 | 920 | 920 | 920 | 920 | 1136 | 1136 | 1136 |
| Height, mm | 1370 | 1370 | 1490 | 1490 | 1490 | 1490 | 1490 | 1490 |
| Nett weight, kg* | 280 | 280 | 368 | 375 | 380 | 580 | 590 | 600 |

| MODEL | CA80 | CA96 | CA115 | CA132 | CA150 | CA175 | CA200 |
|--|------|------|-------|-------|-------|-------|-------|
| REFRIGERATION SYSTEM | | | | | | | |
| Cooling capacity at nominal conditions, kW | 79 | 96 | 114 | 131 | 158 | 191 | 216 |
| Number of systems | 2 | | | | | | |
| Capacity control steps total/unit | 2 | 4 | | | | | |

| COMPRESSORS | | | | | | | |
|---|------|------|------|------|------|------|------|
| Number of compressors | 2 | | | | | | |
| Nominal Power input/compressor, kW | 11.2 | 14.6 | 17.5 | 22.4 | 23.7 | 30.9 | 37.3 |
| Nominal current/compressor, A | 20.9 | 25.0 | 30.6 | 41.0 | 41.3 | 56.1 | 75.3 |
| Maximum power input/compressor, kW | 18.6 | 21.0 | 25.0 | 30.0 | 35.0 | 42.0 | 51.0 |
| Maximum operating current/compressor, A | 35.0 | 37.2 | 44.0 | 53.2 | 62.1 | 73.9 | 96.2 |

| EVAPORATOR | | | | | | | |
|-------------------------------------|--------------|-----|-----|-----|-----|-----|-----|
| Type | shell & tube | | | | | | |
| Water connections (vessel only), mm | 50 | 80 | 80 | 80 | 80 | 100 | 100 |
| Nominal water flow rate, l/s | 3.8 | 4.7 | 5.5 | 6.5 | 7.2 | 8.4 | 9.5 |

| CONDENSER | | | | | | | |
|--|-------|--|--|-------|------|-------|--|
| Number of fans | 4 | | | | 8 | | |
| Full load total current, A | 20 | | | | 40 | | |
| Full load total power, kW | 10.4 | | | | 20.8 | | |
| Total air flow, l/s | 13880 | | | 15997 | | 27760 | |
| Fan sound pressure level, dB(A) at 3 m | 70 | | | 68 | | 73 | |

| | | | | | | | |
|-----------------------------------|------|------|-------|-------|-------|-------|-------|
| Unit maximum operating current, A | 90.0 | 94.4 | 108.0 | 126.4 | 164.2 | 187.8 | 232.4 |
|-----------------------------------|------|------|-------|-------|-------|-------|-------|

| Physical data | | | | | | | |
|------------------|------|------|------|------|------|------|------|
| Length L1, mm* | 2340 | 2340 | 2340 | 2340 | 2340 | 2340 | 2340 |
| Length L2, mm** | 3100 | 3100 | 3100 | 3100 | - | - | - |
| Width W, mm | 1684 | 1684 | 1684 | 2370 | 3300 | 3300 | 3300 |
| Height H, mm | 1490 | 1490 | 1490 | 1530 | 1510 | 1510 | 1510 |
| Nett weight, kg* | 840 | 998 | 1100 | 1200 | 1680 | 1750 | 1880 |

NOTE:

All ratings at nominal operating conditions: +12 C water return temperature, +7 C water supply temperature, +35 C ambient.

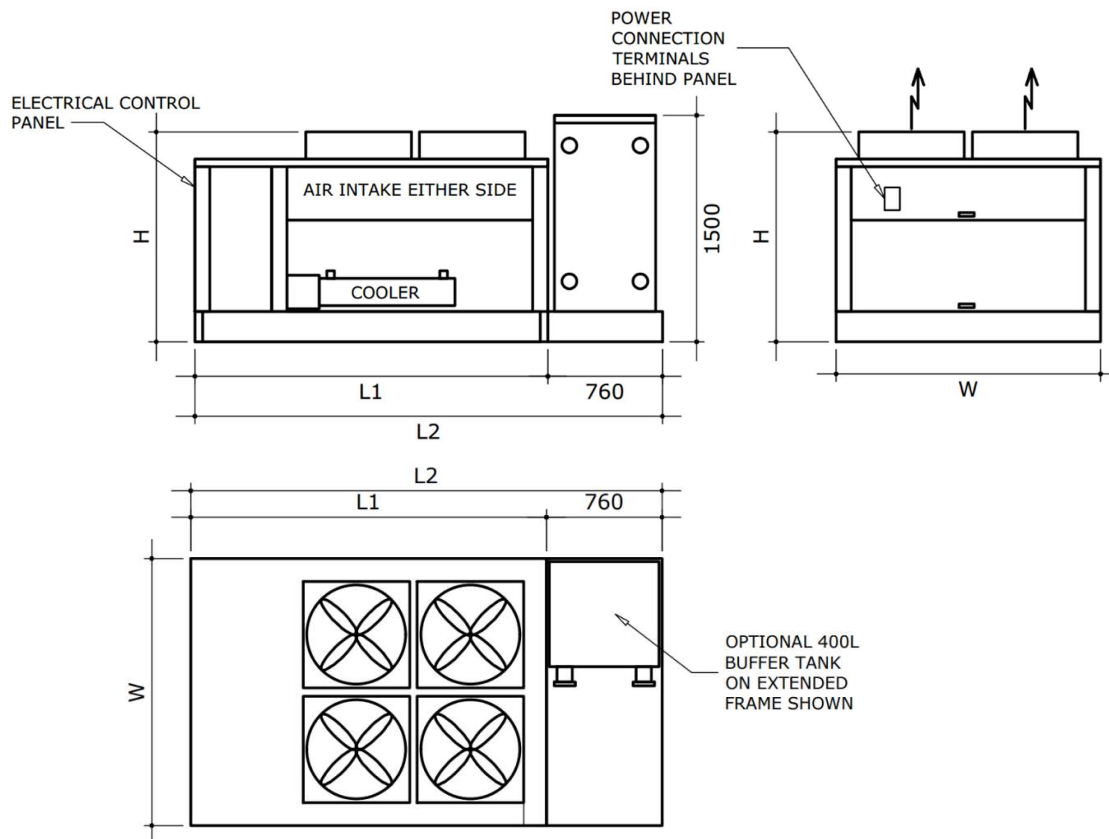
*unit on a standard frame and without accessories

**unit on extended frame with optional buffer tank.

Fluid Chillers Australia Pty Ltd reserve the right to change or modify specifications as required by continuing design and production variations without notice. All specifications should be used as a guide to the application of the equipment.

Full details on specific equipment must be obtained at the time of supply.

This Technical Brochure does not constitute an offer for sale of any product.



HEAD OFFICE

6-10 SOUFFI PLACE
DANDENONG SOUTH
VICTORIA 3175
AUSTRALIA

Phone 03 8796 4888

Fax. 03 9706 6490

e-mail sales@fluidchillers.com.au

www.fluidchillersaustralia.com.au

Your Agent is: